

MARINER

DINING ROOMS



Milano
ITALIAN FURNITURE



MARINER

CLASSIC

CATALOG



1. TRIANON (page 6)



2. LANCASTER (page 24)



5. MALMAISON (page 94)



3. RIVOLI (page 42)



6. NANTES (page 114)



4. WELLINGTON (page 62)



7. BELGRAVIA (page 132)

TRIANON

DINING ROOM



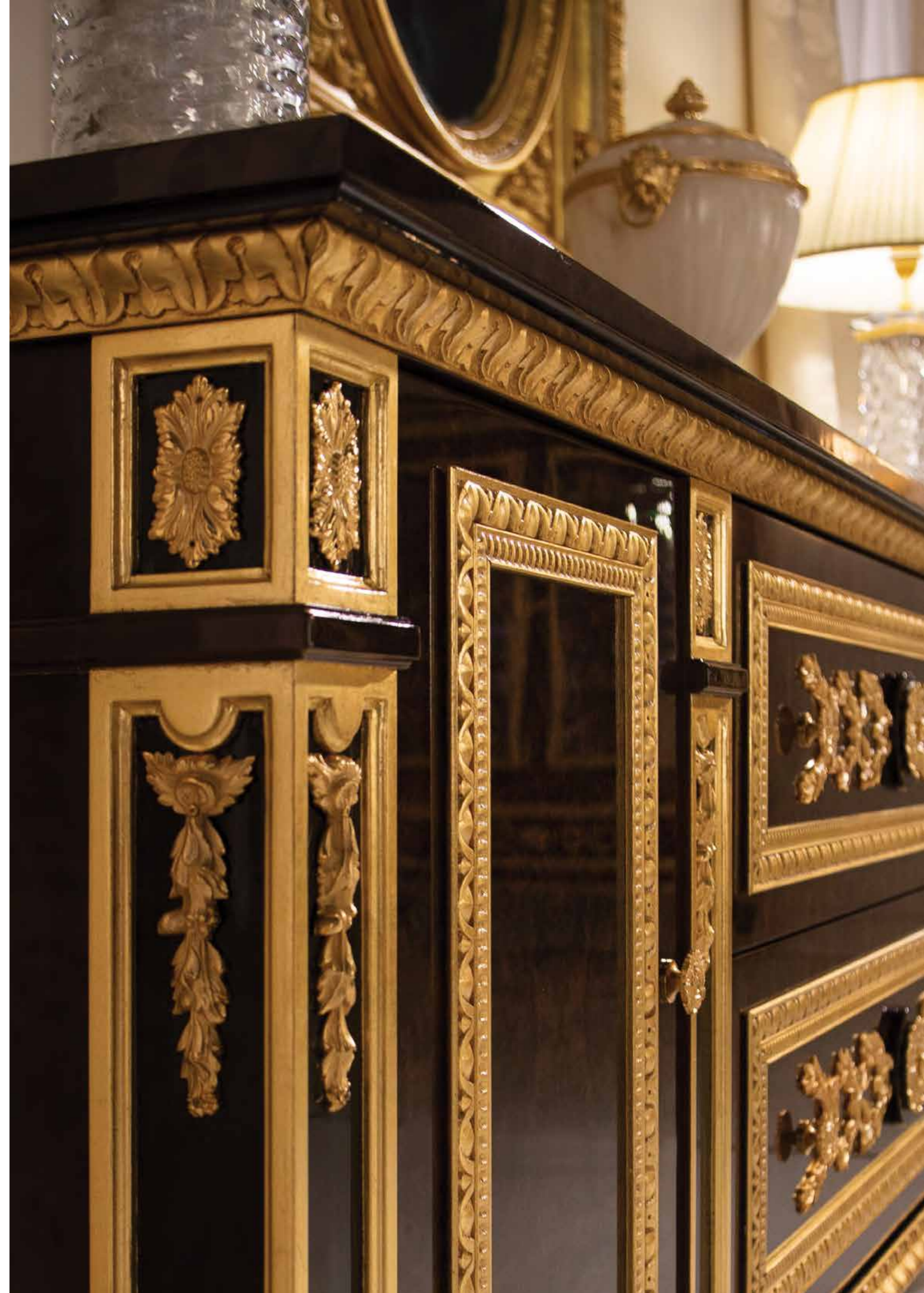
TRIANON COLLECTION

Beautiful collection inspired by the French palaces of the 18th century, this collection of architecture furniture and Louis XVI style was born.

A classic creation born from the constant study in the search for beauty, luxury and elegance, to create exclusive environments both in residential settings and in high-end hotels.

Unique pieces that combine in perfect harmony the supreme quality of their materials with the hands of the artisans who transform them into works of art. The Trianon collection has been created to set the most exclusive environments.

The great ornamental richness in its pieces carved by hand and decorated in gold leaf stands out, combining them with walnut magnifying woods specially selected for each piece and dressed with cast bronze ornaments and chiseled piece by piece by the hands of our artisans.



TRIANON COLLECTION





DINING TABLE – Ref.: 50595.0
Height: 77 cm / 30,32 in
Width: 250 cm / 98,43 in
Depth: 135 cm / 53,15 in
Finish: Finish: NON.POE / OA (584/231)



DINING TABLE – Ref.: 50596.0
Height: 77 cm / 30,32 in
Width: Ø160 cm / 62,99 in
Finish: Finish: NON.POE / OA (584/231)

TRIANON COLLECTION







CHAIR – Ref.: 50599.0
Height: 119 cm / 46,85 in
Width: 53 cm / 23,23 in
Depth: 60 cm / 23,62 in
Net weight: 9,00Kg / 19,84 lb
Finish: NON.POE / OA (584/231)

Fabric: 241.205 / 241.206



ARMCHAIR – Ref.: 50600.0
Height: 119 cm / 46,85 in
Width: 59 cm / 23,23 in
Depth: 60 cm / 23,62 in
Net weight: 11,00Kg / 24,25 lb
Finish: NON.POE / OA (584/231)

Fabric: 241.205 / 241.206





CABINET- Ref.: 50598.0
Height: 215 cm / 84,65 in
Width: 154 cm / 60,63 in
Depth: 45 cm / 17,72 in
Net weight: 213,00Kg / 83,86 lb
Finish: NON.POE / OA (584/231)

LANCASTER

DINING ROOM



LANCASTER COLLECTION

Inspired in the noble environments of the 18th century, this collection of furniture in neoclassical style is born, from meticulous and constant study in the search for beauty, luxury and exclusivity.

Creation that harmoniously combines luxury and elegance to decorate the environments of the most exclusive residences and halls of the most luxurious and elegant hotels in the world.

Furniture that combines in perfect harmony, the author's design and the supreme quality of its noble materials, together with the work of the hands of our master craftsmen, who transform them into true works of art.

On this occasion Mariner has created this collection in collaboration with the Porcelanosa Group that provides us their new material Kryon. Materials carefully selected for each piece in the collection, Cerejeida wood decorated in mahogany tones combining with pieces from Kryon by Porcelanosa and classic moldings decorated with 24k gold leaf, cast bronzes handcrafted by our artisans. decorated in 24k Antique Gold.







DINING TABLE – Ref.: 50515.0
Height: 76 cm / 29,92 in
Width: 250 cm / 98,43 in
Depth: 130 cm / 51,18 in
Net weight: 180,00Kg / 396,48 lb
Finish: CAMD.B. POE/OA (524/231)



DINING TABLE – Ref.: 50516.0
Height: 81 cm / 31,89 in
Width: 160Ø cm / 62,99 in
Net weight: 120,00Kg / 264,32 lb
Finish: CAMD.B. POE/OA (524/231)

LANCASTER COLLECTION



ARMCHAIR – Ref.: 50522.0
Height: 112 cm / 44,09 in
Width: 60 cm / 23,62 in
Depth: 68 cm / 26,77 in
Net weight: 13,00Kg / 28,63 lb
Finish: CAMD.B. POE/OA (524/231)

Fabric: 241.207 / 241.209



CHAIR – Ref.: 50521.0
Height: 112 cm / 44,09 in
Width: 60 cm / 23,62 in
Depth: 65 cm / 25,59 in
Net weight: 11,00Kg / 24,23 lb
Finish: CAMD.B. POE/OA (524/231)

Fabric: 241.207 / 241.209



LANCASTER COLLECTION





LANCASTER COLLECTION



SIDEBOARD – Ref.: 50517.0
Height: 96 cm / 37,4 in
Width: 240 cm / 94,49 in
Depth: 50 cm / 19,69 in
Net weight: 210,00Kg / 462,56 lb
Finish: CAMD.B. POE/OA (524/231)





◀ **CABINET – Ref.: 50520.0**
 Height: 220 cm / 86,61 in
 Width: 175 cm / 68,9 in
 Depth: 50 cm / 19,69 in
 Net weight: 220,00Kg / 484,58 lb
 Finish: CAMD.B.POE/ OA (524/231)

MIRROR – Ref.: 50519.0
 Height: 135 cm / 53,15 in
 Width: 135 cm / 53,15 in
 Depth: 4 cm / 1,57 in
 Net weight: 25,00Kg / 55,07 lb
 Finish: CAMD.B.POE/ OA (524/231)

SIDEBOARD – Ref.: 50518.0
 Height: 96 cm / 37,8 in
 Width: 175 cm / 68,9 in
 Depth: 50 cm / 19,69 in
 Net weight: 175,00Kg / 385,46 lb
 Finish: CAMD.B.POE/ OA (524/231)

RIVOLI

DINING ROOM

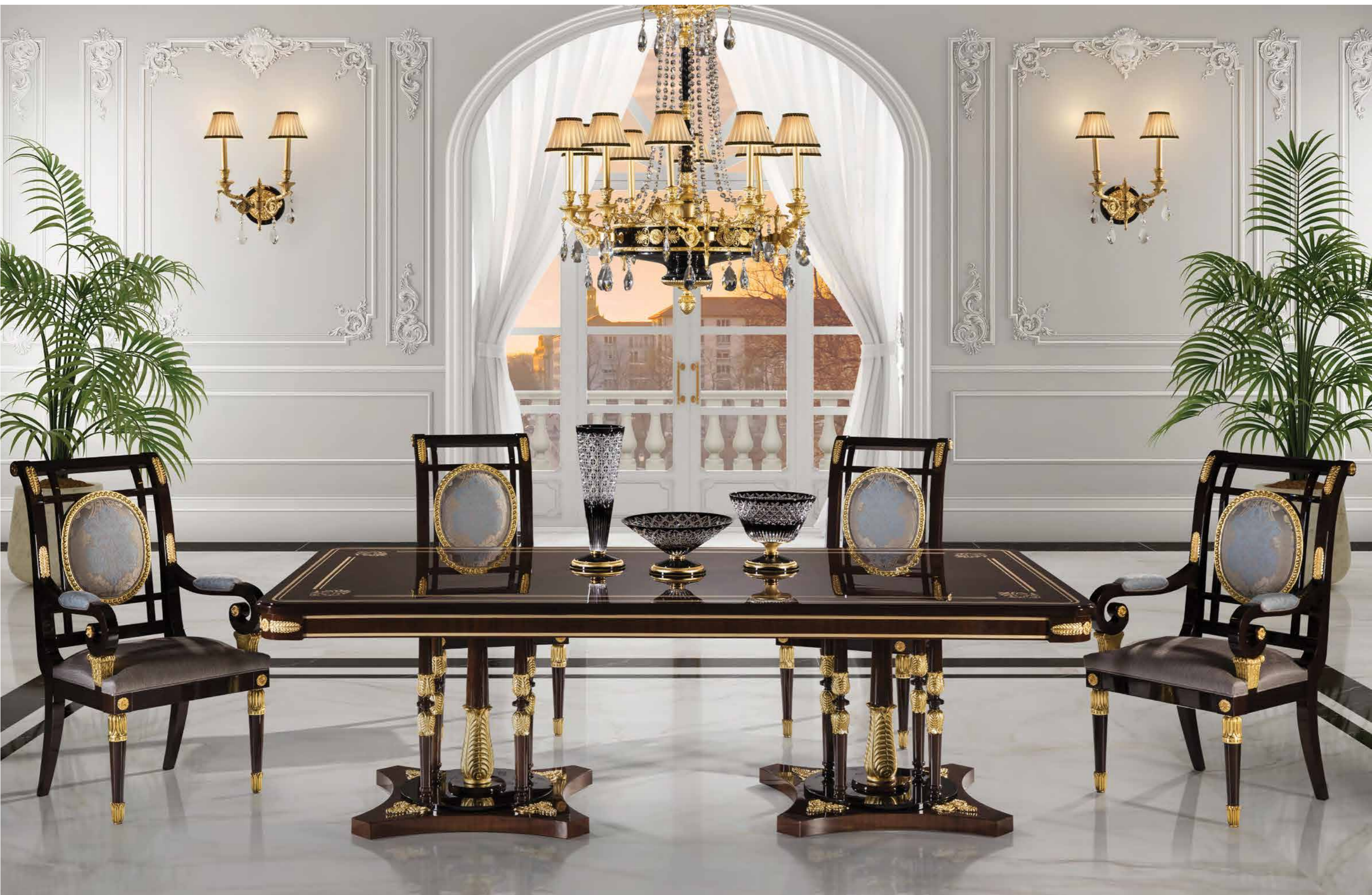


The Rivoli collection has been created to decorate the most elegant and exclusive environments, luxury and a taste for small details is the essence of this collection.

Materials selected and meticulously treated for each piece in the collection, highlights the Palma Cerejeida veneer decorated in dark gold tones that enhance its beauty, the bronzes hand-cast by our artisans decorated in 24k Antique Gold.

Mariner in this collection also offers us two finishing possibilities, apart from the elegant tone, the possibility of decorating the Cerejeida veneer in faded mahogany tones that give a totally different image to the one offered with the elegant tones and also enhances the beauty of the natural drawing of the veins of the Cerejeida sheet.







DINING TABLE – Ref.: 50477.0
Height: 78 cm / 30,71 in
Width: 250 cm / 98,43 in
Depth: 130 cm / 51,18 in
Net weight: 208 ,00 Kg / 458,15 lb
Finish: N.A.B / OA (515/231)

RIVOLI COLLECTION



MARINER



CHAIR – Ref.: 50481.0
Height: 112 cm / 44,09 in
Width: 54 cm / 21,26 in
Depth: 61 cm / 24,02 in
Net weight: 12,00 Kg / 26,43 lb
Finish: N.A.B / OA (515/231)

Fabric: 241.183 / 241.184



ARMCHAIR – Ref.: 50482.0
Height: 112 cm / 44,09 in
Width: 62 cm / 24,41 in
Depth: 61 cm / 24,02 in
Net weight: 14,00 Kg / 30,84 lb
Finish: N.A.B / OA (515/231)

Fabric: 241.183 / 241.184









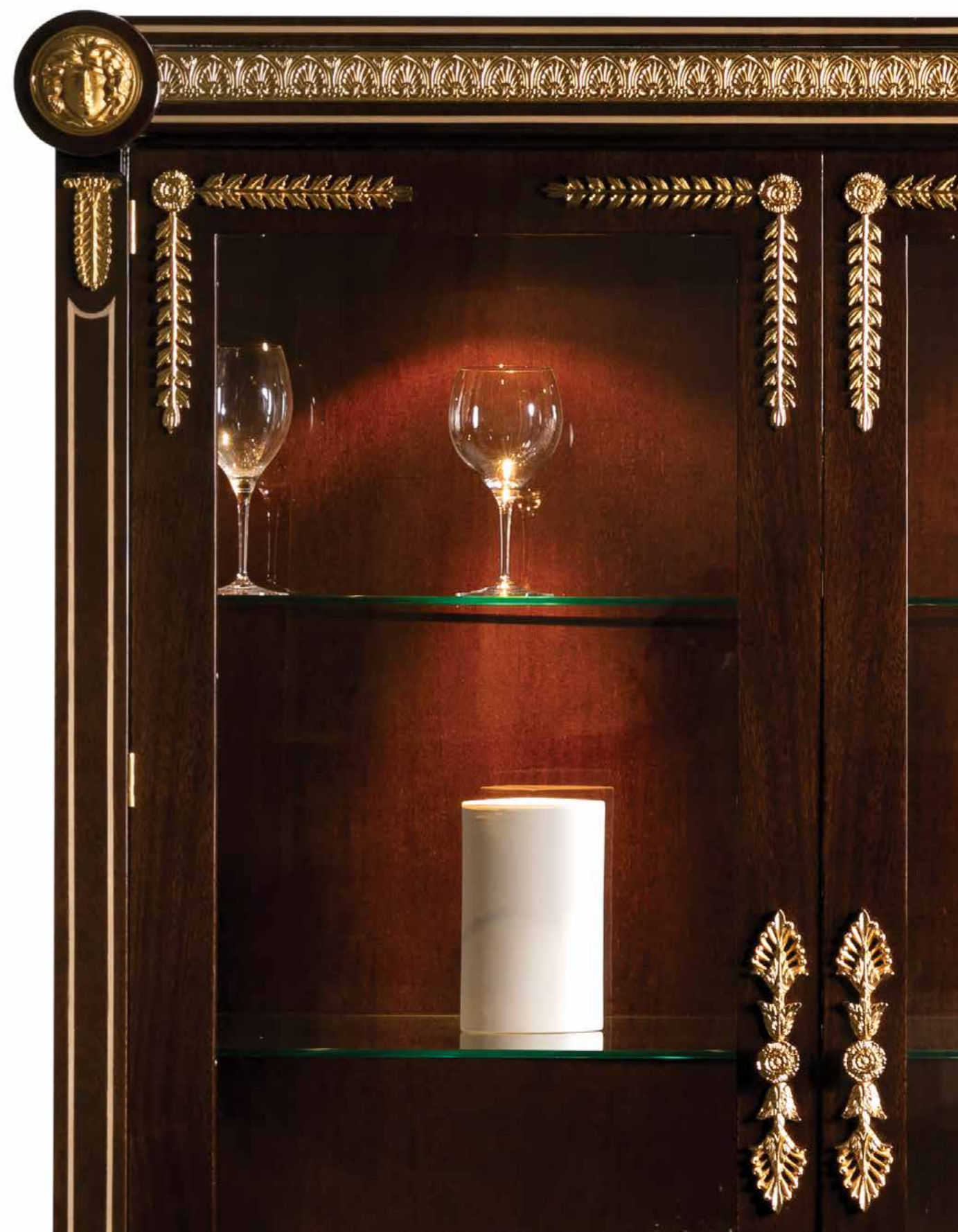
MIRROR – Ref.: 50479.0
Height: 120 cm / 47,24 in
Width: 215 cm / 84,65 in
Depth: 6 cm / 2,36 in
Net weight: 56,00 Kg / 123,35 lb
Finish: N.A.B / OA (515/231)

SIDEBOARD – Ref.: 50478.0
Height: 95 cm / 37,4 in
Width: 240 cm / 94,49 in
Depth: 54 cm / 21,26 in
Net weight: 193,00 Kg / 425,11 lb
Finish: N.A.B / OA (515/231)





CABINET – Ref.: 50480.0
Height: 203 cm / 79,92 in
Width: 150 cm / 59,06 in
Depth: 52 cm / 20,47 in
Net weight: 149,00 Kg / 328,19 lb
Finish: N.A.B / OA (515/231)



WELLINGTON

DINING ROOM



WELLINGTON COLLECTION

The Wellington Collection is also a Neo-classical creation inspired by the Imperial era characterised by bronze ornaments with a gold finish, intricately inlaid table tops, chairs with elegantly shaped backs and the entire collection is carvings decorated with antique gold leaf.

Materials:

Lacqued Option (.0)

High gloss black piano and White, with Polished Brass casted bronze ornaments and carvings decorated with antique gold leaf.

Cerejeira Palm Option (.1)

High gloss White and Cerejeira Palm veneer with Polished brass casted bronze ornaments and carvings decorated with antique gold leaf.

Walnut option (.2)

High gloss White and Walnut burl veneer with Polished brass casted bronze ornaments and carvings decorated with antique gold leaf.





DINING TABLE – Ref.: 50271.0
Height: 76 cm / 29,92 in
Width: 250 cm / 98,43 in
Depth: 130 cm / 51,18 in
Net weight: 180,00 Kg / 396,48 lb
Finish: WE.L. / DB (535/67)



DINING TABLE – Ref.: 50271.2
Height: 76 cm / 29,92 in
Width: 250 cm / 98,43 in
Depth: 130 cm / 51,18 in
Net weight: 180,00 Kg / 396,48 lb
Finish: WE.W. / DB (536/67)



ARMCHAIR – Ref.: 50277.0
Height: 110 cm / 43,31 in
Width: 61 cm / 24,02 in
Depth: 68 cm / 26,77 in
Net weight: 14,00 Kg / 30,84 lb
Finish: POE/NB / DB (425/67)
Fabric: 241.157 / 241.158

CHAIR – Ref.: 50276.0
Height: 110 cm / 43,31 in
Width: 55 cm / 21,65 in
Depth: 68 cm / 26,77 in
Net weight: 11,00 Kg / 24,23 lb
Finish: POE/NB / DB (425/67)
Fabric: 241.157 / 241.158





WELLINGTON COLLECTION



BESPOKE DINING TABLE – Ref.: 50271.0

Height: 76 cm / 29,92 in

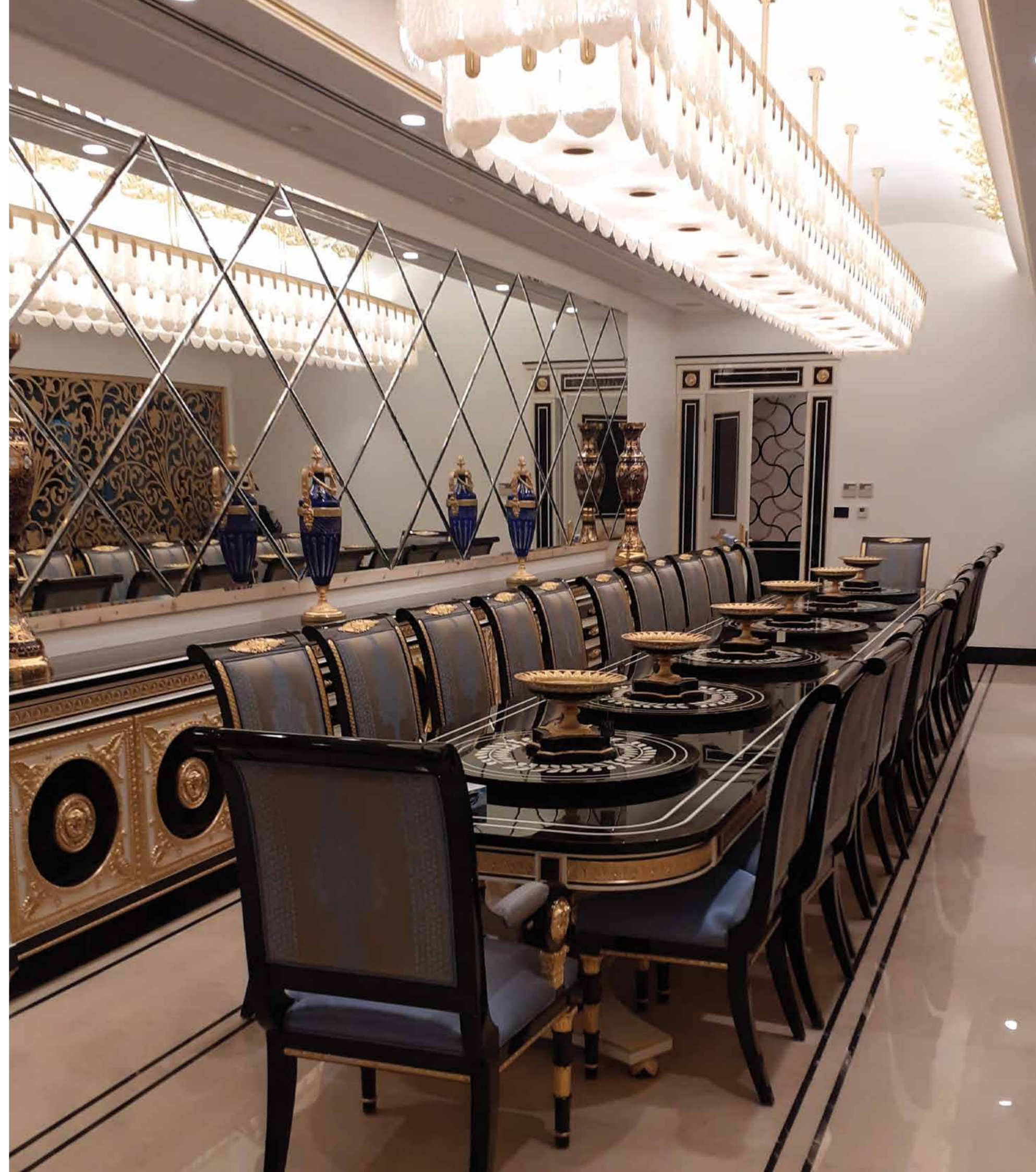
Width: 250 cm / 98,43 in

Depth: 130 cm / 51,18 in

Net weight: 180,00 Kg / 396,48 lb

Finish: WE.L. / DB (535/67)

*** With Lazy Susan**





DINING TABLE– Ref.: 50272.0
Height: 81 cm / 31,89 in
Width: Ø160 cm / 62,99 in
Net weight: 120,00 Kg / 264,32 lb
Finish: WE.L. / DB (535/67)

*** With Lazy Susan**



DINING TABLE – Ref.: 50496.2
Height: 81 cm / 31,89 in
Width: Ø 220 cm / 86,61 in
Net weight: 210,00 Kg / 462,56 lb
Finish: WE.W. / DB (536/67)

* With Lazy Susan

WELLINGTON COLLECTION

MIRROR – Ref.: 50274.0

Height: 110 cm / 43,31 in

Width: 210 cm / 82,68 in

Depth: 10 cm / 3,94 in

Net weight: 34,00 Kg / 74,89 lb

Finish: WE.L / DB (535/67)

SIDEBOARD – Ref.: 50273.0

Height: 95 cm / 37,4 in

Width: 241 cm / 94,88 in

Depth: 50 cm / 19,69 in

Net weight: 210,00 Kg / 462,56 lb

Finish: WE.L / DB (535/67)





MIRROR – Ref.: 50274.2
Height: 110 cm / 43,31 in
Width: 210 cm / 82,68 in
Depth: 10 cm / 3,94 in
Net weight: 34,00 Kg / 74,89 lb
Finish: WE.W / DB (536/67)

SIDEBOARD – Ref.: 50273.2
Height: 95 cm / 37,4 in
Width: 241 cm / 94,88 in
Depth: 50 cm / 19,69 in
Net weight: 210,00 Kg / 462,56 lb
Finish: WE.W / DB (536/67)

WELLINGTON COLLECTION



SIDEBOARD – Ref.: 50505.0

Height: 95 cm / 37,4 in

Width: 220 cm / 86,61 in

Depth: 50 cm / 19,69 in

Net weight: 180,00 Kg / 396,48 lb

Finish: WE.L / DB (535/67)



SIDEBOARD – Ref.: 50505.1

Height: 95 cm / 37,4 in

Width: 220 cm / 86,61 in

Depth: 50 cm / 19,69 in

Net weight: 180,00 Kg / 396,48 lb

Finish: CAMD.B/ OA (523/231)

* Also available in walnut (.2)





SIDEBOARD – Ref.: 50504.1

Height: 95 cm / 37,4 in

Width: 180 cm / 70,87 in

Depth: 50 cm / 19,69 in

Net weight: 150,00 Kg / 330,40 lb

Finish: CAMD.B/ OA (523/231)

*** Also available in lacquered version (.0)**

*** Also available in walnut (.2)**

WELLINGTON COLLECTION



CABINET - Ref.: 50275.0
Height: 206 cm / 81,1 in
Width: 178 cm / 70,08 in
Depth: 49 cm / 19,29 in
Net weight: 186,00 Kg / 409,69 lb
Finish: WE.L / DB (535/67)



WELLINGTON COLLECTION

MIRROR - Ref.: 50280.0

Height: 165 cm / 64,96 in

Width: 112 cm / 44,09 in

Depth: 7 cm / 2,76 in

Net weight: 42,00 Kg / 92,51 lb

Finish: WE.L / DB (535/67)

CONSOLE - Ref.: 50279.0

Height: 81 cm / 31,89 in

Width: 170 cm / 66,93 in

Depth: 50 cm / 19,69 in

Net weight: 36,00 Kg / 79,30 lb

Finish: WE.L / DB (535/67)

ARMCHAIR - Ref.: 50283.0

Height: 86 cm / 33,86 in

Width: 64 cm / 25,2 in

Depth: 68 cm / 26,77 in

Net weight: 11,00 Kg / 24,23 lb

Finish: POE/NB (425)

Suggested Fabric: 241.233

90 MARINER





BESPOKE CONSOLE – Ref.: 92579
Height: 80 cm / 31,50 in
Width: 270 cm / 106,30 in
Depth: 50 cm / 19,69 in
Finish: WE.W / DB (536 /67)

MALMAISON

DINING ROOM



MALMAISON COLLECTION

Inspired by the Parisian classics of the 18th century, this furniture collection was born with a Neoclassical architecture and Empire-style design.

A creation that is born from a meticulous and relentless quest for beauty, luxury and exclusivity.

Designer furniture pieces manufactured with supreme quality materials by our expert artisans who transform them into works of art.

Malmaison, has been created to shine in the most elegant and exclusive environments creating an elegant and glamorous atmosphere without sacrificing essential functionality.

The materials have been carefully selected for each piece of the collection, Makassar ebony wood decorated with a sun composition, with lacquered touches in cracked white, casted bronze handcrafted by our artisans decorated in 24k antique gold.



MALMAISON COLLECTION



DINING TABLE – Ref.: 50430.0
Height: 76 cm / 29,92 in
Width: 250 cm / 98,43 in
Depth: 130 cm / 51,18 in
Net weight: 217,00 Kg / 477,97 lb
Finish: MAM. /OA (560/231)



MALMAISON COLLECTION

MARINER
MADE IN SPAIN





DINING TABLE – Ref.: 50431.0

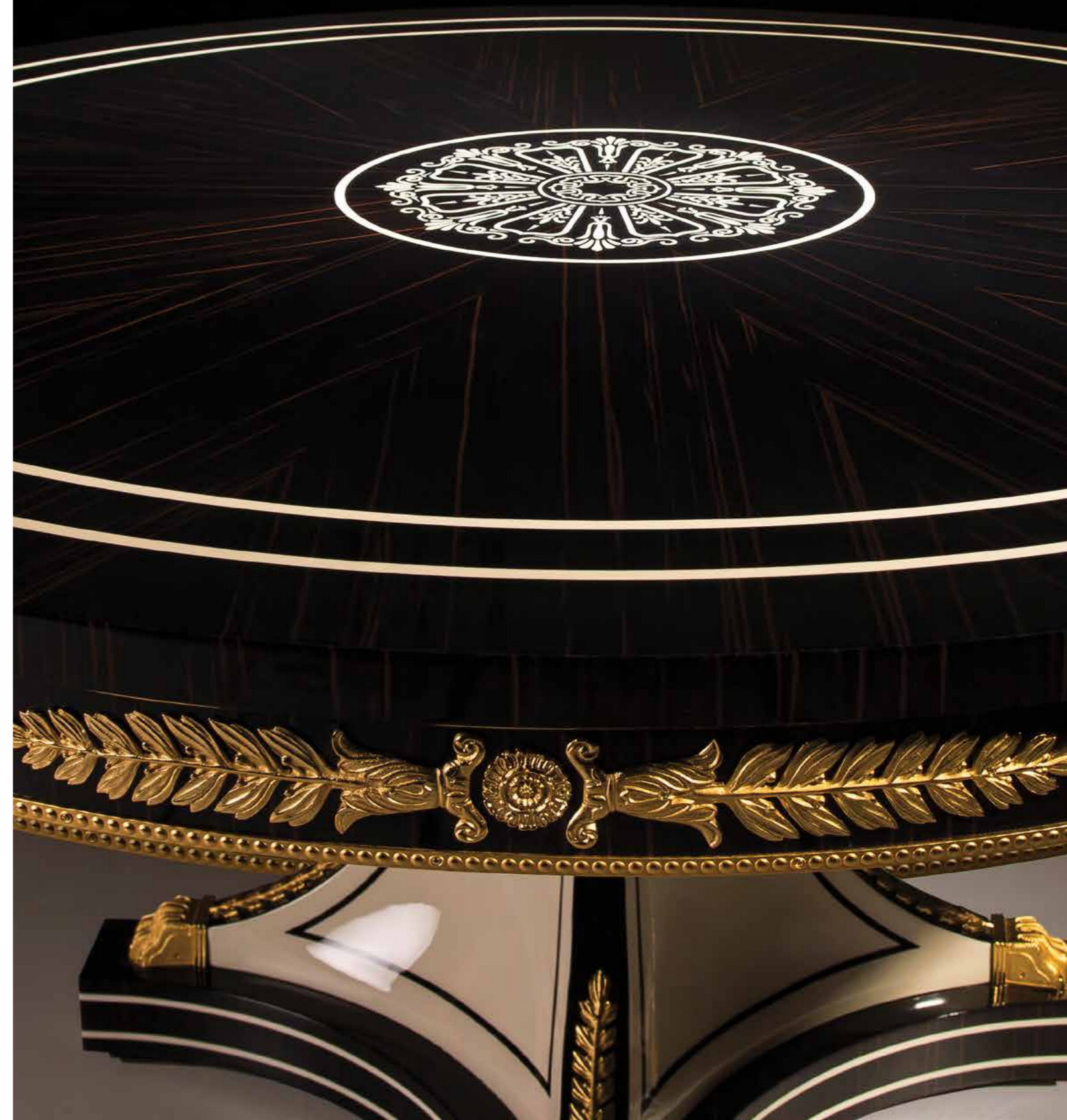
Height: 81 cm / 31,89 in
Width: Ø160 cm / 62,99 in
Net weight: 110,00 Kg /242,29 lb
Finish: MAM. /OA (560/231)

*** With Lazy Susan**

DINING TABLE – Ref.: 50431.1

Height: 76 cm / 29,92 in
Width: Ø160 cm / 62,99 in
Net weight: 104,00 Kg /229,07 lb
Finish: MAM. /OA (560/231)

*** Without Lazy Susan**



MALMAISON COLLECTION



ARMCHAIR – Ref.: 50436.0
Height: 110 cm / 43,31 in
Width: 57 cm / 22,44 in
Depth: 67 cm / 26,38 in
Net weight: 10,00 Kg /22,03 lb
Finish: MAM. /OA (560/231)
Fabric: 241.166 / 241.167

CHAIR – Ref.: 50435.0
Height: 110 cm / 43,31 in
Width: 57 cm / 22,44 in
Depth: 67 cm / 26,38 in
Net weight: 9,00 Kg /19,82 lb
Finish: MAM. /OA (560/231)
Fabric: 241.166 / 241.167



ARMCHAIR – Ref.: 50436.0
Height: 110 cm / 43,31 in
Width: 57 cm / 22,44 in
Depth: 67 cm / 26,38 in
Net weight: 10,00 Kg / 22,03 lb
Finish: CAMD.B /OA (523/231)
Fabric: 241.166 / 241.167



BESPOKE DINING TABLE – Ref.: 92764

Height: 81 cm / 31,89 in
Width: Ø160 cm / 62,99 in
Net weight: 110,00 Kg / 242,29 lb
Finish: CAMD.B /OA (523/231)

* With Lazy Susan

MALMAISON COLLECTION



SIDEBOARD – Ref.: 50432.0
Height: 93 cm / 36,61 in
Width: 240 cm / 94,49 in
Depth: 50 cm / 19,69 in
Net weight: 200,00 Kg /440,53 lb
Finish: MAM. /OA (560/231)

MIRROR – Ref.: 50433.0
Height: 110 cm / 43,31 in
Width: 210 cm / 82,68 in
Depth: 4 cm / 1,57 in
Net weight: 29,00 Kg /63,88 lb
Finish: MAM. /OA (560/231)



MALMAISON COLLECTION



CABINET – Ref.: 50434.0

Height: 213 cm / 83,86 in

Width: 155 cm / 61,02 in

Depth: 50 cm / 19,69 in

Net weight: 196,00 Kg / 431,72 lb

Finish: MAM. /OA (560/231)

NANTES

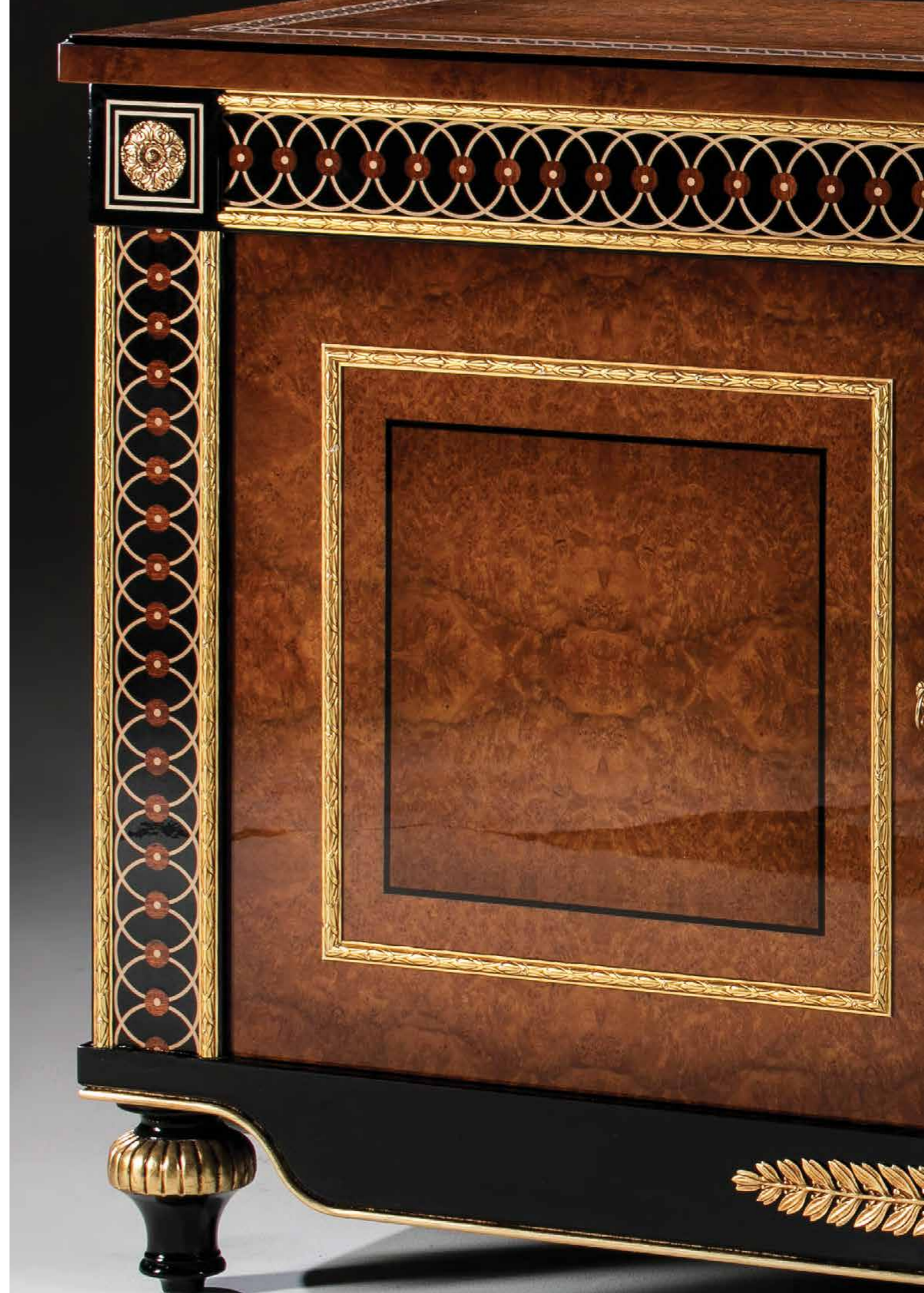
DINING ROOM



The Nantes collection, designed by Sergio Pérez; a regular contributor to Mariner, has been inspired, as its name suggests, by the beautiful French city of Nantes.

Nantes is a city furrowed by several freely flowing rivers, just like its cosmopolitan culture, with the feminine flow of its water in contrast to the classical architecture and straight-walled buildings of masculine character.

The Nantes collection reflects with great elegance and style such essence, offering compelling and exquisite furniture; the seating set shows its feminine side, a contrast induced to delight the eye. A set of geometric marquetry-work and bronze decorations blended with the most delicate oak burl veneer. An absolute gem ready to be enjoyed with taste and refinement.



DINING TABLE – Ref.: 50339.0
Height: 76 cm / 29,92 in
Width: 250 cm / 98,43 in
Depth: 130 cm / 51,18 in
Net weight: 212,00 Kg / 466,96 lb
Finish: NAN. /OF (544/55)





DINING TABLE – Ref.: 50340.0
Height: 81 cm / 31,89 in
Width: Ø160 cm / 62,99 in
Net weight: 135,00 Kg / 297,36 lb
Finish: NAN. /OF (544/55)

*** With Lazy Susan**



CHAIR – Ref.: 50344.0
Height: 97 cm / 38,19 in
Width: 55 cm / 21,65 in
Depth: 58 cm / 22,83 in
Net weight: 7,00 Kg / 15,42 lb
Finish: NAN. (544)
Suggested Fabric: 241.185



NANTES COLLECTION

CABINET – Ref.: 50343.0
Height: 218 cm / 85,83 in
Width: 159 cm / 62,6 in
Depth: 50 cm / 19,69 in
Net weight: 205,00 Kg / 451,54 lb
Finish: NAN. /OF (544/55)





MIRROR– Ref.: 50342.0
Height: 106 cm / 41,73 in
Width: 210 cm / 82,68 in
Depth: 6 cm / 2,36 in
Net weight: 68,00 Kg / 149,78 lb
Finish: NAN. /OF (544/55)

SIDEBOARD – Ref.: 50341.0
Height: 99 cm / 38,98 in
Width: 239 cm / 94,09 in
Depth: 52 cm / 20,47 in
Net weight: 220,00 Kg / 484,58 lb
Finish: NAN. /OF (544/55)

COMMODE – Ref.: 50361.0
Height: 96 cm / 37,8 in
Width: 164 cm / 64,57 in
Depth: 53 cm / 20,87 in
Net weight: 98,00 Kg / 215,86 lb
Finish: NAN. /OF (544/55)



NANTES COLLECTION



MIRROR– Ref.: 50348.0

Height: 104 cm / 40,94 in

Width: 94 cm / 37,01 in

Depth: 6 cm / 2,36 in

Net weight: 26,00 Kg / 57,27 lb

Finish: NAN. /OF (544/55)

CONSOLE– Ref.: 50347.0

Height: 91 cm / 35,83 in

Width: 169 cm / 66,54 in

Depth: 46 cm / 18,11 in

Net weight: 50,00 Kg / 110,13 lb

Finish: NAN. /OF (544/55)



BELGRAVIA

DINING ROOM



BELGRAVIA COLLECTION

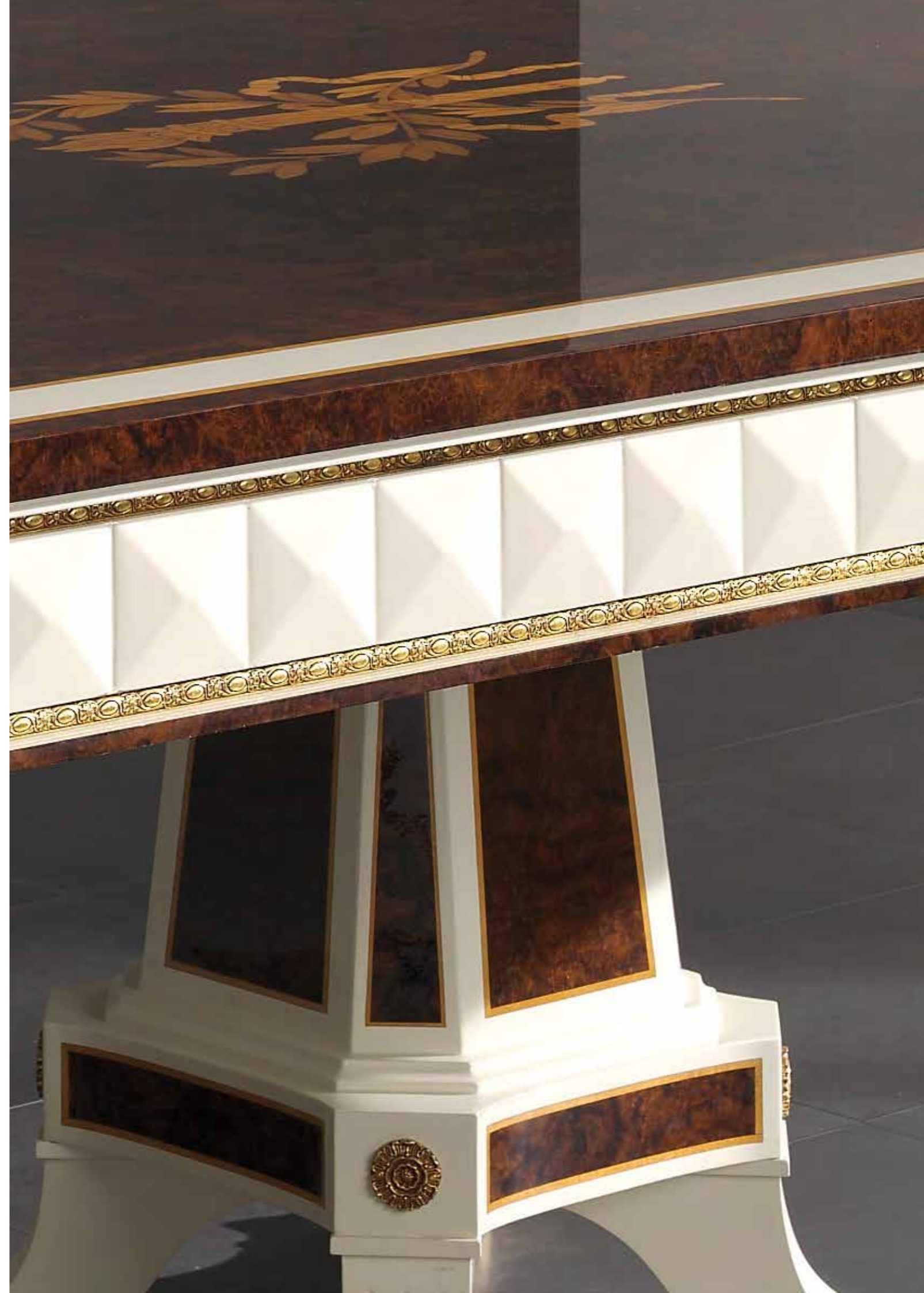
The Georgian style Belgravia collection outstands for its refreshing and elegant combination of walnut burl veneer and fine laquerwork.

It is also embellished with mariner's unique sand casted bronze ornamental pieces in french gold finish as well as beautifully hand-carved mouldings and columns in carefully applied gold leaf.

Belgravia is an extensive collection composed by dining room & living room sets as well as bedroom furniture.

Materials:

Walnut burl wood combined with white Lacquer, Sycamore marquetry inlays hand-carved wood columns and casted bronze ornaments.





DINING TABLE – Ref.: 50031.0
Height: 76 cm / 29,92 in
Width: 246 cm / 96,85 in
Depth: 132 cm / 51,97 in
Net weight: 250,00 Kg / 550,66 lb
Finish: BEL. / OF (488/55)



DINING TABLE – Ref.: 50043.0
Height: 76 cm / 29,92 in
Width: 246 cm / 96,85 in
Depth: 132 cm / 51,97 in
Net weight: 188,00 Kg / 414,10 lb
Finish: BEL. / OF (488/55)



CHAIR – Ref.: 50034.0
Height: 98 cm / 38,58 in
Width: 47 cm / 18,5 in
Depth: 62 cm / 24,41 in
Net weight: 10,00 Kg / 22,03 lb
Finish: BEL. / OF (488/55)

ARMCHAIR – Ref.: 50035.0
Height: 98 cm / 38,58 in
Width: 47 cm / 18,5 in
Depth: 62 cm / 24,41 in
Net weight: 12,00 Kg / 26,43 lb
Finish: BEL. / OF (488/55)

Suggested Fabric: 241.188



MIRROR – Ref.: 50032.0
Height: 107 cm / 42,13 in
Width: 212 cm / 83,46 in
Depth: 6 cm / 2,36 in
Net weight: 52,00 Kg / 114,54 lb
Finish: BEL. / OF (488/55)

SIDEBOARD – Ref.: 50028.0
Height: 91 cm / 35,83 in
Width: 222 cm / 87,4 in
Depth: 53 cm / 20,87 in
Net weight: 158,00 Kg / 348,02 lb
Finish: BEL. / OF (488/55)





CABINET – Ref.: 50033.0
Height: 210 cm / 82,68 in
Width: 154 cm / 60,63 in
Depth: 51 cm / 20,08 in
Net weight: 224,00 Kg / 493,39 lb
Finish: BEL. / OF (488/55)





MIRROR – Ref.: 50061.0

Height: 138 cm / 54,33 in

Width: 94 cm / 37,01 in

Depth: 9 cm / 3,54 in

Net weight: 34,00 Kg / 74,89 lb

Finish: POE (380)

CONSOLE – Ref.: 50050.0

Height: 83 cm / 32,68 in

Width: 149 cm / 58,66 in

Depth: 45 cm / 17,72 in

Net weight: 50,00 Kg / 110,13 lb

Finish: BEL. / OF (488/55)

GALLERY

CATALOG



1. MONACO COLLECTION PAGE 150



2. GATSBY COLLECTION PAGE 172



3. WILSHIRE COLLECTION PAGE 190

MONACO

DINING ROOM



Monaco Collection, Mariner proposes an elegant and cosmopolitan lifestyle: current codes and needs act as promoters of the most exclusive trends inside and outside the home, creating an intense, elegant and iconic modernity.

An aesthetic created to adorn the most beautiful mansions, palaces, hotel suits and yachts in the world.

Collection of straight lines and volumes marked by rounded corners.

The wooden frame, in Macassar Ebony veneer, is embellished with brass ornaments that outline the surface of the drawers with a circular central bronze motif.

The rounded corners of the profile are covered by leather.

Search for exquisiteness in the combination of design and quality in the manufacture of each piece in this collection, with the highest level of cabinetmaking carried out by our master craftsmen combining classic cabinetmaking with the most sophisticated current manufacturing techniques, looking for exclusive pieces for exclusive environments.









DINING TABLE – Ref.: 50523.0

Height: 76 cm / 29,92 in
Width: 250 cm / 98,43 in
Depth: 120 cm / 47,24 in
Net weight: 200,00 Kg / 440 lb
Finish: MAK.B/NB /PO/DB (599/67)

Leather: 250.005



DINING TABLE – Ref.: 50524.0

Height: 81 cm / 31,89 in
Width: 160 Ø cm / 63 in
Net weight: 170,00 Kg / 374,45 lb
Finish: MAK.B/NB /PO/DB (599/67)

Leather: 250.005



DINING TABLE – Ref.: 50523.E

Height: 76 cm / 29,92 in
Width: 350 cm / 137,79 in
Depth: 120 cm / 47,24 in
Finish: MAK.B/NB /PO/DB (599/67)

Leather: 250.005

MONACO COLLECTION





*CHAIR – Ref.: 50527.0
Height: 89 cm / 35,04 in
Width: 56 cm / 22,05 in
Depth: 58 cm / 22,83 in
Net weight: 10,00 Kg / 22,03 lb
Finish: MAK.B/NB (598)*

Leather: 250.005



*ARMCHAIR – Ref.: 50584.0
Height: 89 cm / 35,04 in
Width: 56 cm / 22,05 in
Depth: 58 cm / 22,83 in
Net weight: 10,00 Kg / 22,03 lb
Finish: MAK.B/NB (598)*

Leather: 250.005

MONACO COLLECTION



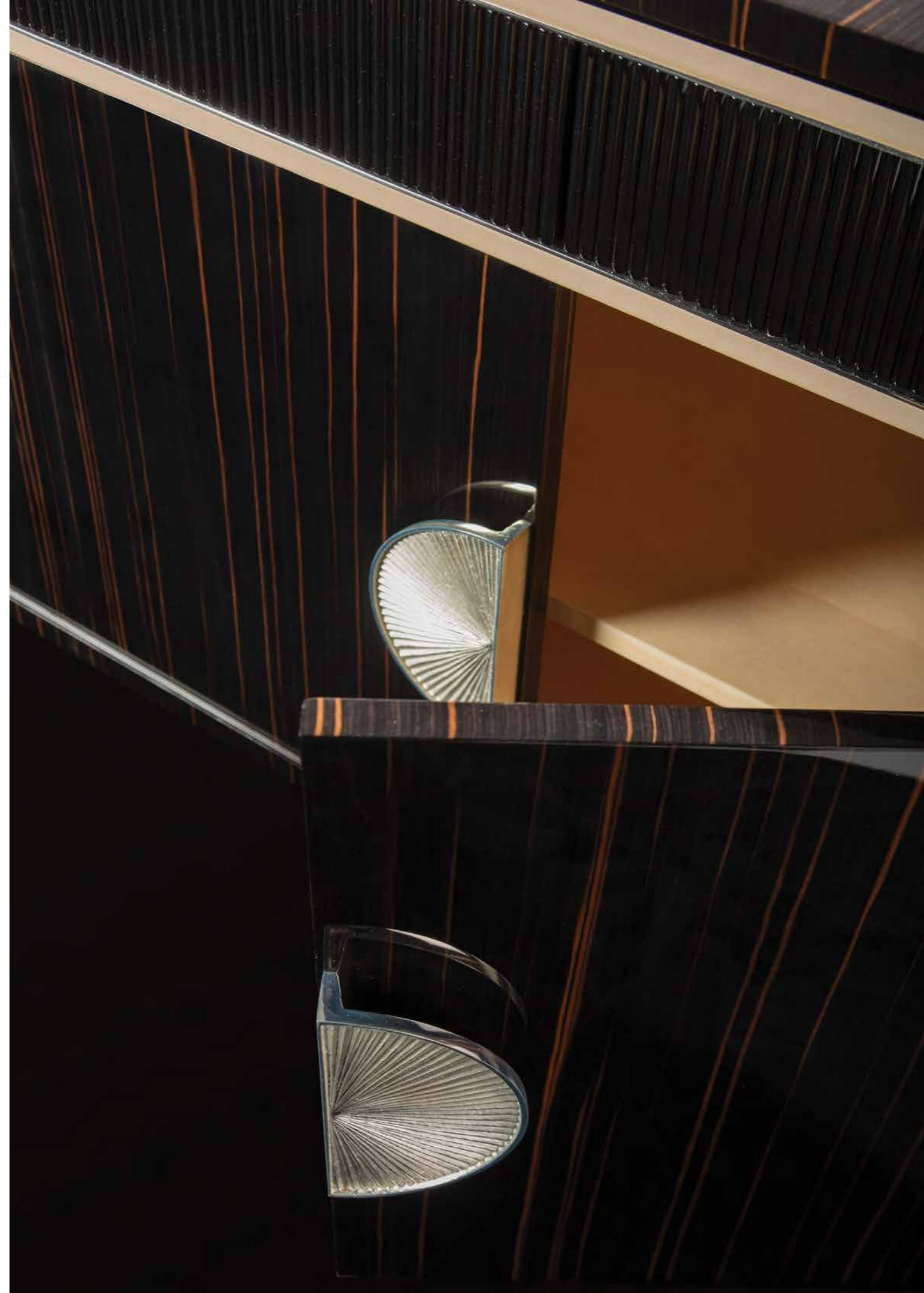


*MIRROR– Ref.: 50526.0
Height: 135 cm / 53,15 in
Width: 135 cm / 53,15 in
Depth: 5 cm / 1,97 in
Net weight: 28,00 Kg / 61,67 lb
Finish: MAK.B (486)*

*SIDEBOARD– Ref.: 50525.0
Height: 93 cm / 36,61 in
Width: 220 cm / 86,61 in
Depth: 50 cm / 19,69 in
Net weight: 195,00 Kg / 429,52 lb
Finish: MAK.B/NB /DB/OA (598/595)*

Leather: 250.005

MONACO COLLECTION



MONACO COLLECTION



*CABINET – Ref.: 50570.0
Height: 190 cm / 74,8 in
Width: 130 cm / 51,18 in
Depth: 40 cm / 15,75 in
Net weight: 185,00 Kg / 407,49 lb
Finish: MAK.B/NB /DB/OA (598/595)
Leather: 250.005*



GATSBY

DINING ROOM



Mariner's Gatsby range is inspired by the vibrant and decadent world of F. Scott Fitzgerald's classic novel "the Great Gatsby", set in New York during the "roaring twenties". It was a time when the most flamboyant characters of America's high society were swept up with the rising popularity of jazz and an explosion of culture- the ideal setting for the emergence of the Great Gatsby.

The exquisite pieces in Mariner's Gatsby range, which feature in the Gallery Collection, would have blended in perfectly in the magnificent home of Gatsby himself, radiating an air of luxury created by beautifully designed, luxurious pieces inspired by the taste and sophistication of a bygone age.

Materials:

Makassar veneer, casted bronze, sycamore inlays, venetian glass handel & brass accents.





DINING TABLE – Ref. 50241.0
Height: 77 cm / 30,31 in
Width: 250 cm / 98,43 in
Depth: 150 cm / 59,06 in
Net weight: 176,00 Kg / 387,67 lb
Finish: MAK.B / AC.B (486/477)





CHAIR – Ref. 50243.0
Height: 104 cm / 40,94 in
Width: 56 cm / 22,05 in
Depth: 61 cm / 24,02 in
Net weight: 8,00 Kg / 17,62 lb
Finish: MAK.B / PLA.B (486/4)

Suggested Fabric: 243.035

ARMCHAIR – Ref. 50244.0
Height: 104 cm / 40,94 in
Width: 65 cm / 25,59 in
Depth: 61 cm / 24,02 in
Net weight: 10,00 Kg / 22,03 lb
Finish: MAK.B / PLA.B (486/4)

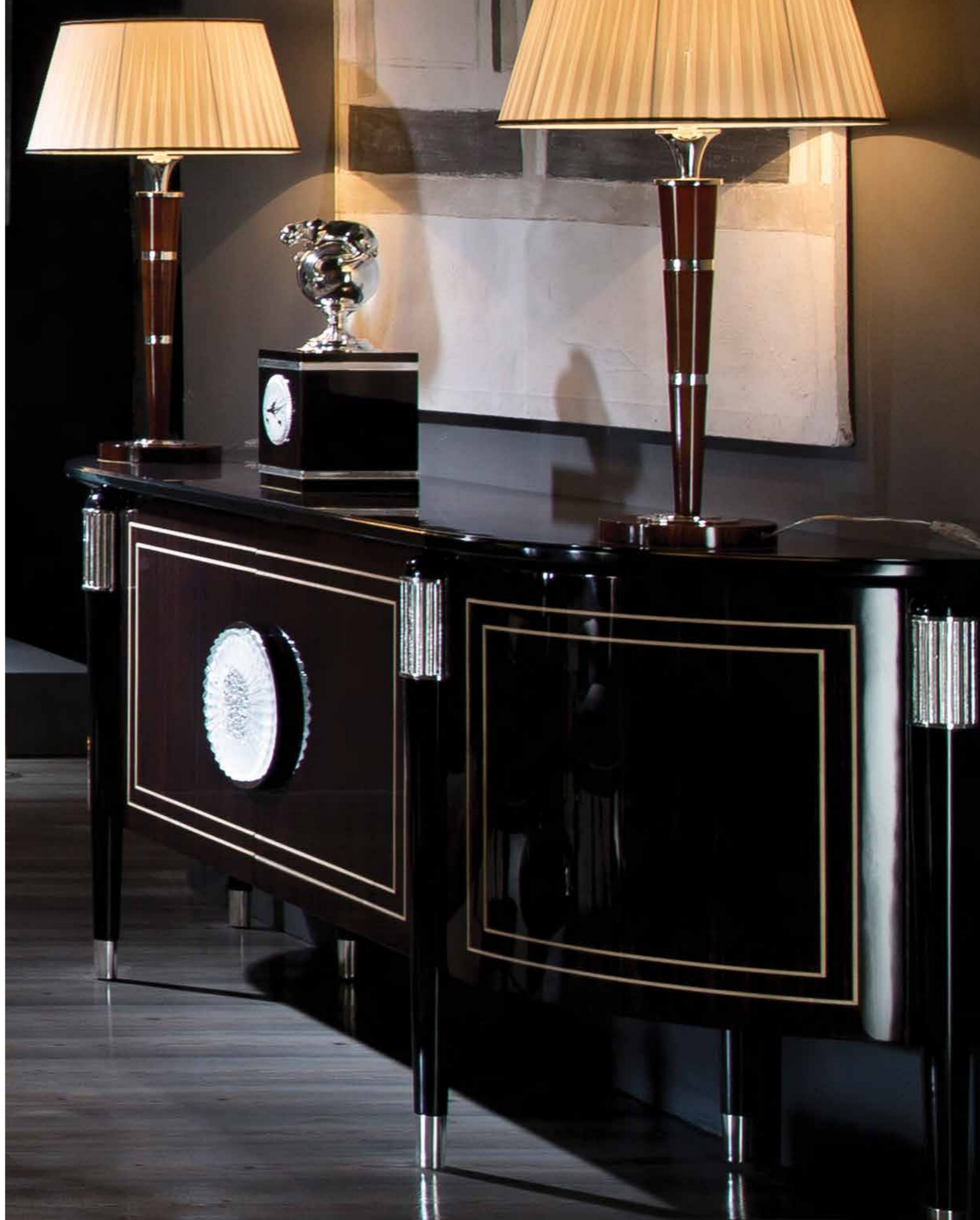
Suggested Fabric: 243.035





MIRROR – Ref. 50214.0
Width: Ø130 cm / 51,18 in
Depth: 8 cm / 3,15 in
Net weight: 32,00 Kg / 70,48 lb
Finish: MAK.B (486)
Leather: 250.001

SIDEBOARD – Ref. 50221.0
Height: 95 cm / 37,4 in
Width: 240 cm / 94,49 in
Depth: 50 cm / 19,69 in
Net weight: 140,00 Kg / 308,37 lb
Finish: MAK.B / PLA.B / AC.B (486/531)



GATSBY COLLECTION



GATSBY COLLECTION





*CABINET – Ref. 50242.0
Height: 172 cm / 67,72 in
Width: 131 cm / 51,57 in
Depth: 50 cm / 19,69 in
Net weight: 135,00 Kg / 297,36 lb
Finish: MAK.B / PL.B / AC.B (486/531)*



GATSBY COLLECTION



*CONSOLE – Ref. 50268.0
Height: 81 cm / 31,89 in
Width: 160 cm / 62,99 in
Depth: 50 cm / 19,69 in
Net weight: 60,00 Kg / 132,16 lb
Finish: MAK.B / AC.B (486/477)*



WILSHIRE

DINING ROOM



WILSHIRE COLLECTION

Materials:
Pau Ferro veener, casted bronze handles & brass accents.



DINING TABLE – Ref. 50195.0
Height: 77 cm / 30,31 in
Width: 250 cm / 98,43 in
Depth: 120 cm / 47,24 in
Net weight: 185,00 Kg / 407,49 lb
Finish: CA.B / PLA.B (490/4)



DINING TABLE – Ref. 50249.0
Height: 76 cm / 29,92 in
Width: 250 cm / 98,43 in
Depth: 120 cm / 47,24 in
Net weight: 146,00 Kg / 321,59 lb
Finish: CA.B / PLA.B (490/4)



*CHAIR – Ref. 50197.0
Height: 105 cm / 41,34 in
Width: 52 cm / 20,47 in
Depth: 55 cm / 21,65 in
Net weight: 9,00 Kg / 19,82 lb
Finish: CA.B (490)*

Suggested Fabric: 241.220

*ARMCHAIR – Ref. 50198.0
Height: 105 cm / 41,34 in
Width: 52 cm / 20,47 in
Depth: 55 cm / 21,65 in
Net weight: 12,00 Kg / 26,43 lb
Finish: CA.B (490)*

Suggested Fabric 241.220





*CABINET – Ref. 50196.0
Height: 166 cm / 65,35 in
Width: 135 cm / 53,15 in
Depth: 47 cm / 18,5 in
Net weight: 165,00 Kg / 363,44 lb
Finish: CA.B / PLA.B (490/4)*