

WALL BRACKETS











CLASSIC WALL BRACKETS

SUPREME LUXURY EXPERIENCE

SINCE 1893



WALL BRACKET- Ref.: 02531.0
Height: 55 cm / 21,65 in
Width: 26 cm / 10,24 in
Depth: 20 cm / 7,87 in
Net weight: 4,20 Kg / 9,25 lb
Finish: OF (55)





WALL BRACKET– Ref.: 18155.0
Height: 25 cm / 9,84 in
Width: 20 cm / 7,87 in
Depth: 28 cm / 11,02 in
Net weight: 2,33 Kg / 5,13lb
Finish: AN.PV (254)



WALL BRACKET– Ref.: 18156.0
Height: 25 cm / 9,84 in
Width: 42 cm / 16,54 in
Depth: 25 cm / 9,84 in
Net weight: 4,80 Kg / 10,57 lb
Finish: AN.PV (254)



WALL BRACKET– Ref.: 18490.0
Height: 65 cm / 25,59 in
Width: 24 cm / 9,45 in
Depth: 25 cm / 9,84 in
Net weight: 4,50 Kg / 9,91 lb
Finish: PLA. ANT/NB (390)



WALL BRACKET– Ref.: 18581.0
Height: 47 cm / 18,5 in
Width: 51 cm / 20,08 in
Depth: 27 cm / 10,63 in
Net weight: 6,60 Kg / 14,54 lb
Finish: OF (55)



WALL BRACKET– Ref.: 18644.0
Height: 29 cm / 11,42 in
Width: 44 cm / 17,32 in
Depth: 24 cm / 9,45 in
Net weight: 5,57 Kg / 12,27 lb
Finish: AN (49)



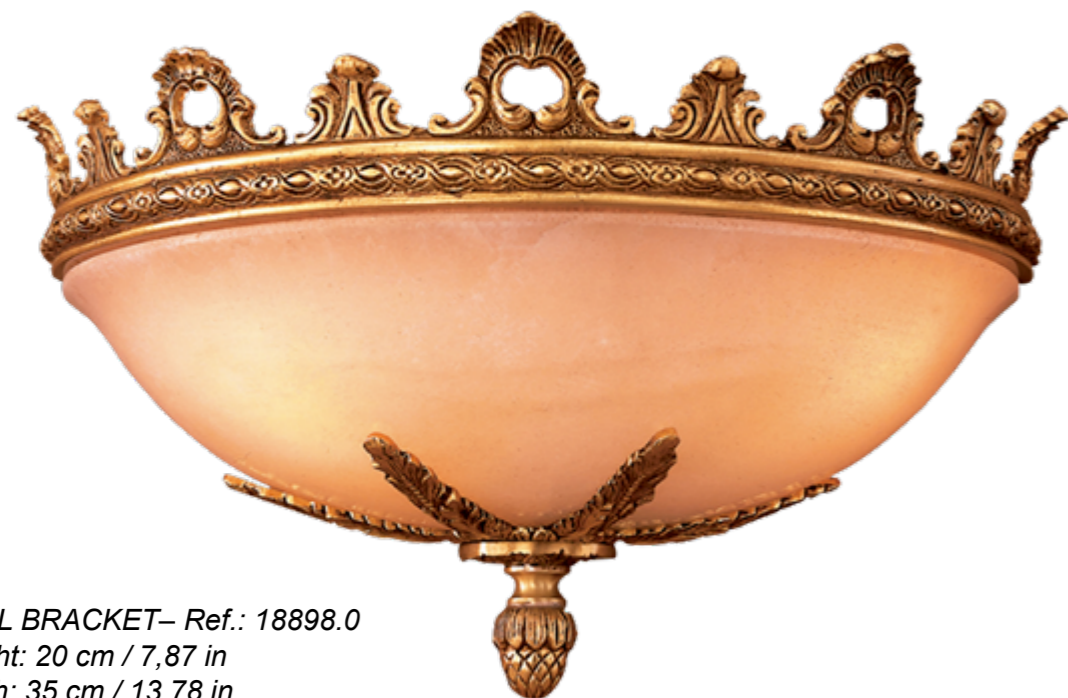
WALL BRACKET– Ref.: 18645.0
Height: 30 cm / 11,81 in
Width: 20 cm / 7,87 in
Depth: 29 cm / 11,42 in
Net weight: 3,14 Kg / 6,92 lb
Finish: AN (49)



WALL BRACKET- Ref.: 18739.0
Height: 16 cm / 6,3 in
Width: 34 cm / 13,39 in
Depth: 17 cm / 6,69 in
Net weight: 1,40 Kg / 3,08 lb
Finish: AN.PV (254)

WHITE ALABASTER

WALL BRACKET- Ref.: 18739.1
(BRANDY ALABASTER)



WALL BRACKET- Ref.: 18898.0
Height: 20 cm / 7,87 in
Width: 35 cm / 13,78 in
Depth: 18 cm / 7,09 in
Net weight: 3,20 Kg / 7,05 lb
Finish: OF (55)

WHITE ALABASTER

WALL BRACKET- Ref.: 18898.1
(BRANDY ALABASTER)





WALL BRACKET– Ref.: 19012.0
Height: 99 cm / 38,98 in
Width: 46 cm / 18,11 in
Depth: 25 cm / 9,84 in
Net weight: 7,06 Kg / 15,55 lb
Finish: OA (231)



WALL BRACKET– Ref.: 19069.0
Height: 31 cm / 12,2 in
Width: 30 cm / 11,81 in
Depth: 18 cm / 7,09 in
Net weight: 2,30 Kg / 5,07 lb
Finish: OF/NST (100)





WALL BRACKET– Ref.: 19084.0
Height: 73 cm / 28,74 in
Width: 42 cm / 16,54 in
Depth: 20 cm / 7,87 in
Net weight: 7,01 Kg / 15,44 lb
Finish: OF (55)



WALL BRACKET– Ref.: 19085.0
Height: 73 cm / 28,74 in
Width: 42 cm / 16,54 in
Depth: 20 cm / 7,87 in
Net weight: 7,01 Kg / 15,44 lb
Finish: OF (55)





WALL BRACKET- Ref.: 19100.0
Height: 67 cm / 26,38 in
Width: 36 cm / 14,17 in
Depth: 40 cm / 15,75 in
Net weight: 7,22 Kg / 15,90 lb
Finish: OA (231)





WALL BRACKET– Ref.: 19137.0
Height: 157 cm / 61,81 in
Width: 32 cm / 12,6 in
Depth: 27 cm / 10,63 in
Net weight: 11,40 Kg / 25,11 lb
Finish: BROX/AN (218)



WALL BRACKET– Ref.: 19158.0
Height: 44 cm / 17,32 in
Width: 21 cm / 8,27 in
Depth: 15 cm / 5,91 in
Net weight: 4,60 Kg / 10,13 lb
Finish: OF (55)



WALL BRACKET– Ref.: 19166.0
Height: 30 cm / 11,81 in
Width: 21 cm / 8,27 in
Depth: 10 cm / 3,94 in
Net weight: 2,40 Kg / 5,29 lb
Finish: OF (55)



WALL BRACKET– Ref.: 19211.1
Height: 28 cm / 11,02 in
Width: 20 cm / 7,87 in
Depth: 35 cm / 13,78 in
Net weight: 3,40 Kg / 7,49 lb
Finish: OF (55)

AMBER CRYSTAL



WALL BRACKET– Ref.: 19298.1
Height: 72 cm / 28,35 in
Width: 44 cm / 17,32 in
Depth: 22 cm / 8,66 in
Net weight: 4,60 Kg / 10,13 lb
Finish: POE (380)



*WALL BRACKET– Ref.: 19230.0
Height: 97 cm / 38,19 in
Width: 40 cm / 15,75 in
Depth: 20 cm / 7,87 in
Net weight: 9,01 Kg / 19,85 lb
Finish: OA (231)*

WALL BRACKET- Ref.: 19328.0
Height: 64 cm / 25,2 in
Width: 47 cm / 18,5 in
Depth: 25 cm / 9,84 in
Net weight: 5,80 Kg / 12,78 lb
Finish: OF (55)





*WALL BRACKET– Ref.: 19347.0
Height: 86 cm / 33,86 in
Width: 50 cm / 19,69 in
Depth: 25 cm / 9,84 in
Net weight: 7,80 Kg / 17,18 lb
Finish: OA (231)*



WALL BRACKET– Ref.: 19386.0
Height: 51 cm / 20,08 in
Width: 38 cm / 14,96 in
Depth: 20 cm / 7,87 in
Net weight: 6,80 Kg / 14,98 lb
Finish: PL. ANT (387)

WHITE GLASS



WALL BRACKET– Ref.: 19386.1
Height: 51 cm / 20,08 in
Width: 38 cm / 14,96 in
Depth: 20 cm / 7,87 in
Net weight: 6,80 Kg / 14,98 lb
Finish: OF (55)

GOLD GLASS



WALL BRACKET– Ref.: 19388.0
Height: 65 cm / 25,59 in
Width: 23 cm / 9,06 in
Depth: 22 cm / 8,66 in
Net weight: 2,62 Kg / 5,77 lb
Finish: OF/NST (100)



WALL BRACKET– Ref.: 19397.0
Height: 41 cm / 16,14 in
Width: 27 cm / 10,63 in
Depth: 15 cm / 5,91 in
Net weight: 2,23 Kg / 4,91 lb
Finish: OF (55)



WALL BRACKET– Ref.: 19398.0
Height: 41 cm / 16,14 in
Width: 27 cm / 10,63 in
Depth: 15 cm / 5,91 in
Net weight: 2,23 Kg / 4,91 lb
Finish: OF (55)



WALL BRACKET– Ref.: 19443.0
Height: 35 cm / 13,78 in
Width: 21 cm / 8,27 in
Depth: 11 cm / 4,33 in
Net weight: 2,31 Kg / 5,90 lb
Finish: OF (55)

WHITE ALABASTER



WALL BRACKET– Ref.: 19492.0
Height: 61 cm / 24,02 in
Width: 34 cm / 13,39 in
Depth: 29 cm / 11,42 in
Net weight: 4,20 Kg / 9,25 lb
Finish: OF/NST (100)



WALL BRACKET– Ref.: 19496.0
Height: 31 cm / 12,2 in
Width: 32 cm / 12,6 in
Depth: 12 cm / 4,72 in
Net weight: 3,99 Kg / 8,79 lb
Finish: PLA.VI. (56)

WHITE GLASS



WALL BRACKET– Ref.: 19496.1
Height: 31 cm / 12,2 in
Width: 32 cm / 12,6 in
Depth: 12 cm / 4,72 in
Net weight: 3,99 Kg / 8,79 lb
Finish: OF (55)

GOLD GLASS



WALL BRACKET– Ref.: 19521.0
Height: 40 cm / 15,75 in
Width: 24 cm / 9,45 in
Depth: 12 cm / 4,72 in
Net weight: 4,01 Kg / 8,83 lb
Finish: OF (55)



WALL BRACKET– Ref.: 19572.1
Height: 24 cm / 9,45 in
Width: 41 cm / 16,14 in
Depth: 21 cm / 8,27 in
Net weight: 3,78 Kg / 8,33 lb
Finish: OF (55)
GOLD GLASS



WALL BRACKET– Ref.: 19648.0
Height: 19 cm / 7,48 in
Width: 46 cm / 18,11 in
Depth: 21 cm / 8,27 in
Net weight: 3,00 Kg / 6,61 lb
Finish: OF (55)



WALL BRACKET– Ref.: 19604.0
Height: 24 cm / 9,45 in
Width: 46 cm / 18,11 in
Depth: 23 cm / 9,06 in
Net weight: 3,60 Kg / 7,93 lb
Finish: OF (55)

Ref.: 19604.0 (Scholer crystal)
Ref.: 19604.1 (Swarovski crystal)



WALL BRACKET– Ref.: 19673.0
Height: 80 cm / 31,5 in
Width: 30 cm / 11,81 in
Depth: 24 cm / 9,45 in
Net weight: 7,11 Kg / 15,66 lb
Finish: OF (55)



WALL BRACKET– Ref.: 19766.0
Height: 53 cm / 20,87 in
Width: 36 cm / 14,17 in
Depth: 24 cm / 9,45 in
Net weight: 3,26 Kg / 7,18 lb
Finish: OF (55)



*WALL BRACKET– Ref.: 19767.0
Height: 42 cm / 16,54 in
Width: 21 cm / 8,27 in
Depth: 24 cm / 9,45 in
Net weight: 2,70 Kg / 5,95 lb
Finish: OF (55)*



*WALL BRACKET– Ref.: 19815.0
Height: 42 cm / 16,54 in
Width: 40 cm / 15,75 in
Depth: 25 cm / 9,84 in
Net weight: 3,58 Kg / 7,89 lb
Finish: OF (55)*



WALL BRACKET– Ref.: 19838.0
Height: 50 cm / 19,69 in
Width: 40 cm / 15,75 in
Depth: 24 cm / 9,45 in
Net weight: 2,54 Kg / 5,59 lb
Finish: OF/NST (100)

SWAROVSKI ELEMENTS





WALL BRACKET– Ref.: 19849.0
Height: 65 cm / 25,59 in
Width: 64 cm / 25,2 in
Depth: 40 cm / 15,75 in
Net weight: 15,80 Kg / 34,80 lb
Finish: OF (55)

SCHOLER CRYSTAL



WALL BRACKET– Ref.: 19880.0
Height: 60 cm / 23,62 in
Width: 37 cm / 14,57 in
Depth: 15 cm / 5,91 in
Net weight: 3,20 Kg / 7,05 lb
Finish: PLA.VI (56)



WALL BRACKET– Ref.: 19881.0
Height: 60 cm / 23,62 in
Width: 37 cm / 14,57 in
Depth: 15 cm / 5,91 in
Net weight: 3,20 Kg / 7,05 lb
Finish: PLA.VI (56)



WALL BRACKET- Ref.: 19882.0
Height: 52 cm / 20,47 in
Width: 50 cm / 19,69 in
Depth: 23 cm / 9,06 in
Net weight: 5,53 Kg / 12,18 lb
Finish: PLA.VI (56)



*WALL BRACKET– Ref.: 19891.0
Height: 77 cm / 30,31 in
Width: 28 cm / 11,02 in
Depth: 14 cm / 5,51 in
Net weight: 2,20 Kg / 4,85 lb
Finish: PLA.VI (56)*





*WALL BRACKET- Ref.: 19892.0
Height: 110 cm / 43,31 in
Width: 28 cm / 11,02 in
Depth: 14 cm / 5,51 in
Net weight: 1,80 Kg / 3,96 lb
Finish: OF (55)*



*WALL BRACKET– Ref.: 19921.0
Height: 100 cm / 39,37 in
Width: 64 cm / 25,2 in
Depth: 38 cm / 14,96 in
Net weight: 16,71 Kg / 36,81 lb
Finish: OA (231)*

SCHOLER CRYSTAL



*WALL BRACKET– Ref.: 19929.0
Height: 92 cm / 36,22 in
Width: 60 cm / 23,62 in
Depth: 30 cm / 11,81 in
Net weight: 14,40 Kg / 31,72 lb
Finish: OA (231)*

SCHOLER CRYSTAL



WALL BRACKET– Ref.: 19954.0
Height: 53 cm / 20,87 in
Width: 45 cm / 17,72 in
Depth: 23 cm / 9,06 in
Net weight: 4,00 Kg / 8,81 lb
Finish: PLA. VI/NB (455)



WALL BRACKET– Ref.: 20050.0
Height: 68 cm / 26,77 in
Width: 15 cm / 5,91 in
Depth: 27 cm / 10,63 in
Net weight: 3,00 Kg / 6,61 lb
Finish: OF (55)



*WALL BRACKET- Ref.: 20006.0
Height: 51 cm / 20,08 in
Width: 30 cm / 11,81 in
Depth: 27 cm / 10,63 in
Net weight: 4,20 Kg / 9,25 lb
Finish: OF (55)*





*WALL BRACKET– Ref.: 20023.0
Height: 65 cm / 25,59 in
Width: 41 cm / 16,14 in
Depth: 20 cm / 7,87 in
Net weight: 7,00 Kg / 15,42 lb
Finish: OA (231)*





WALL BRACKET– Ref.: 20051.0
Height: 62 cm / 24,41 in
Width: 38 cm / 14,96 in
Depth: 22 cm / 8,66 in
Net weight: 5,00 Kg / 11,01 lb
Finish: OA/B/NB (456)





WALL BRACKET- Ref.: 20051.0
Height: 62 cm / 24,41 in
Width: 38 cm / 14,96 in
Depth: 22 cm / 8,66 in
Net weight: 5,00 Kg / 11,01 lb
Finish: P.ANT/B/NB (457)





WALL BRACKET- Ref.: 20066.0
Height: 61 cm / 24,02 in
Width: 42 cm / 16,54 in
Depth: 24 cm / 9,45 in
Net weight: 6,00 Kg / 13,22 lb
Finish: OF/NST (100)



WALL BRACKET- Ref.: 20082.0
Height: 89 cm / 35,04 in
Width: 22 cm / 8,66 in
Depth: 19 cm / 7,48 in
Net weight: 4,25 Kg / 9,36 lb
Finish: OA/NB (288)





WALL BRACKET– Ref.: 20093.0
Height: 47 cm / 18,5 in
Width: 31 cm / 12,2 in
Depth: 18 cm / 7,09 in
Net weight: 1,84 Kg / 4,05 lb
Finish: OA (231)



WALL BRACKET– Ref.: 20094.0
Height: 42 cm / 16,54 in
Width: 39 cm / 15,35 in
Depth: 15 cm / 5,91 in
Net weight: 1,85 Kg / 4,07 lb
Finish: OF (55)





*WALL BRACKET– Ref.: 20102.0
Height: 49 cm / 19,29 in
Width: 37 cm / 14,57 in
Depth: 18 cm / 7,09 in
Net weight: 4,30 Kg / 9,47 lb
Finish: OA (231)*





WALL BRACKET- Ref.: 20103.0
Height: 107 cm / 42,13 in
Width: 49 cm / 19,29 in
Depth: 17 cm / 6,69 in
Net weight: 5,00 Kg / 11,01 lb
Finish: OA (231)





*WALL BRACKET- Ref.: 20111.0
Height: 46 cm / 18,11 in
Width: 33 cm / 12,99 in
Depth: 13 cm / 5,12 in
Net weight: 1,63 Kg / 3,59 lb
Finish: OA (231)*





WALL BRACKET- Ref.: 20185.0
Height: 68 cm / 26,77 in
Width: 43 cm / 16,93 in
Depth: 27 cm / 10,63 in
Net weight: 6,15 Kg /13,55 lb
Finish: OA/NB (288)





WALL BRACKET– Ref.: 20265.0
Height: 48 cm / 18,9 in
Width: 10 cm / 3,94 in
Depth: 17 cm / 6,69 in
Net weight: 2,00 Kg /4,41 lb
Finish: OA (231)

WALL BRACKET– Ref.: 20266.0
Height: 22 cm / 8,66in
Width: 12 cm / 4,72 in
Depth: 16 cm / 6,3 in
Net weight: 2,00 Kg /4,41 lb
Finish: OA (231)



WALL BRACKET– Ref.: 20118.0
Height: 36 cm / 14,17 in
Width: 16 cm / 6,3 in
Depth: 29 cm / 11,42 in
Net weight: 1,68 Kg /3,70 lb
Finish: AN(49)



GALLERY WALL BRACKETS

SUPREME LUXURY EXPERIENCE

SINCE 1893



WALL BRACKET- Ref.: 19924.0
Height: 73 cm / 28,74 in
Width: 19 cm / 7,48 in
Depth: 19 cm / 7,48 in
Net weight: 2,01 Kg /4,43 lb
Finish: PLA.B (4)



WALL BRACKET- Ref.: 19968.0
Height: 54 cm / 21,26 in
Width: 14 cm / 5,51 in
Depth: 20 cm / 7,87 in
Net weight: 3,40 Kg /7,49 lb
Finish: PLA.B (4)



WALL BRACKET- Ref.: 20001.0
Height: 53 cm / 20,87 in
Width: 34 cm / 13,39 in
Depth: 17 cm / 6,69 in
Net weight: 5,60 Kg /12,33 lb
Finish: OF (55)





*WALL BRACKET– Ref.: 20029.0
Height: 88 cm / 34,65 in
Width: 60 cm / 23,62 in
Depth: 35 cm / 13,78 in
Net weight: 14,20 Kg /31,28 lb
Finish: OF (55)*

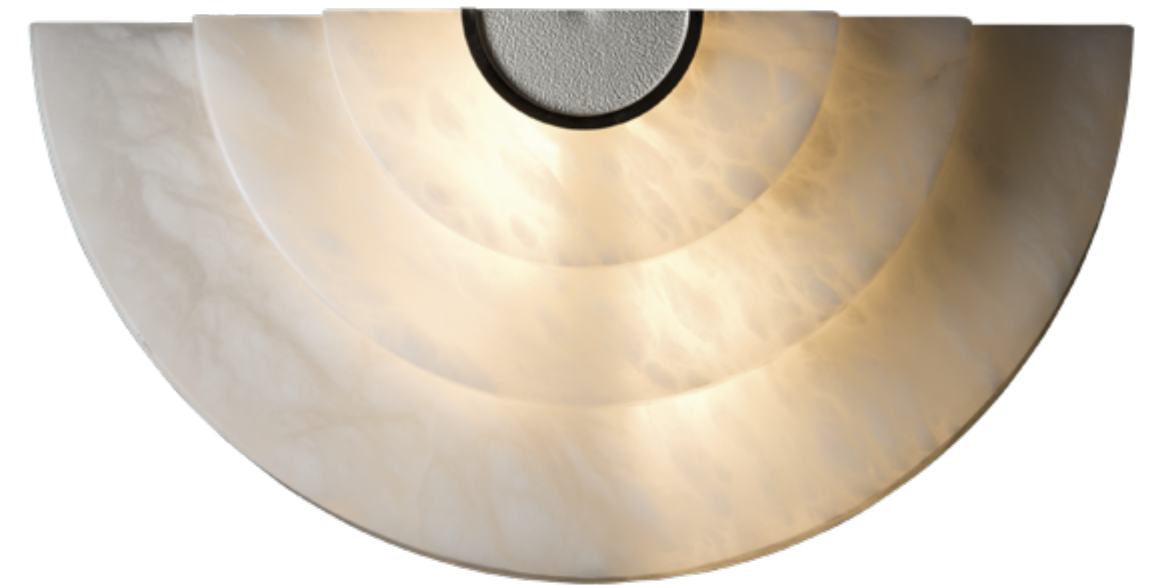




*WALL BRACKET– Ref.: 20032.0
Height: 95 cm / 37,4 in
Width: 35 cm / 13,78 in
Depth: 15 cm / 5,91 in
Net weight: 4,10 Kg /9,03 lb
Finish: NI.B (516)*



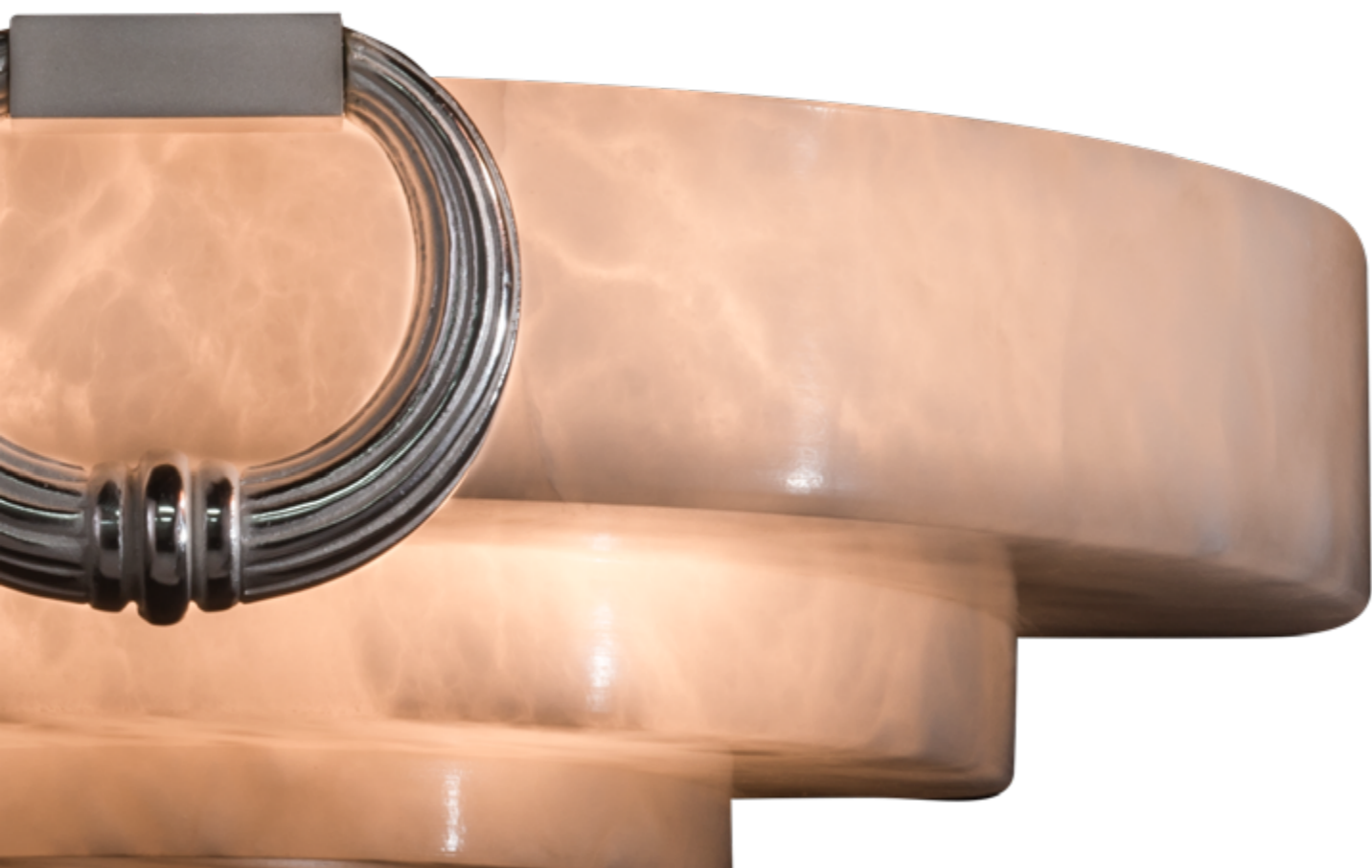
*WALL BRACKET– Ref.: 20083.0
Height: 26 cm / 10,24 in
Width: 24 cm / 9,45 in
Depth: 13 cm / 5,12 in
Net weight: 1,55 Kg /3,41 lb
Finish: PLA.B (4)*



*WALL BRACKET- Ref.: 20099.0
Height: 23 cm / 9,06 in
Width: 41 cm / 16,14 in
Depth: 12 cm / 4,72 in
Net weight: 3,00 Kg /6,61 lb
Finish: PL.ANT. (387)*



WALL BRACKET- Ref.: 20090.0
Height: 12 cm / 4,72 in
Width: 41 cm / 16,14 in
Depth: 23 cm / 9,06 in
Net weight: 3,50 Kg /7,71 lb
Finish: PL.ANT (387)





*WALL BRACKET– Ref.: 20142.1
Height: 40 cm / 15,75 in
Width: 21 cm / 8,27 in
Depth: 11 cm / 4,33 in
Net weight: 6,00 Kg /13,22 lb
Finish: OA (231)*





WALL BRACKET- Ref.: 20144.1
(24K Gold Glass)
Height: 41 cm / 16,14 in
Width: 26 cm / 10,24 in
Depth: 13 cm / 5,12 in
Net weight: 4,00 Kg /8,81 lb
Finish: OA (231)





WALL BRACKET- Ref.: 20152.0
Height: 40 cm / 15,75 in
Width: 24 cm / 9,45 in
Depth: 12 cm / 4,72 in
Net weight: 4,90 Kg /10,79 lb
Finish: CR.B (420)





*WALL BRACKET– Ref.: 20160.1
Height: 39 cm / 15,35 in
Width: 28 cm / 11,02 in
Depth: 17 cm / 6,69 in
Net weight: 3,10 Kg / 6,83 lb
Finish: CR.B (420)*



*WALL BRACKET– Ref.: 20161.0
Height: 86 cm / 33,86 in
Width: 20 cm / 7,87 in
Depth: 10 cm / 3,94 in
Net weight: 6,1 Kg / 13,44 lb
Finish: B.BR (550)*



*WALL BRACKET– Ref.: 20163.0
Height: 65 cm / 25,59 in
Width: 20 cm / 7,87 in
Depth: 10 cm / 3,94 in
Net weight: 5,75 Kg / 12,00 lb
Finish: B.BR (550)*



*WALL BRACKET– Ref.: 20162.0
Height: 45 cm / 17,72 in
Width: 20 cm / 7,87 in
Depth: 10 cm / 3,94 in
Net weight: 3,70 Kg / 8,15 lb
Finish: B.BR (550)*



*WALL BRACKET– Ref.: 20165.0
Height: 44 cm / 17,32 in
Width: 22 cm / 8,66 in
Depth: 11 cm / 4,33 in
Net weight: 3,35 Kg / 7,38 lb
Finish: PL.ANT. (387)*

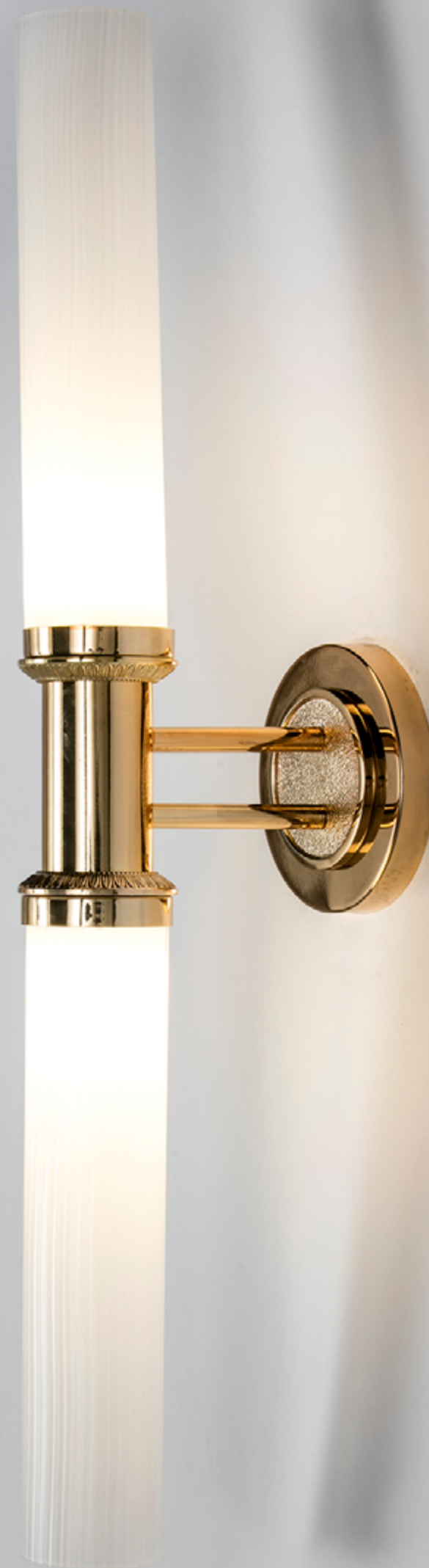




WALL BRACKET- Ref.: 20212.0
Height: 42 cm / 16,54 in
Width: 13 cm / 5,12 in
Depth: 17 cm / 6,69 in
Net weight: 1,55 Kg / 3,41 lb
Finish: DB (67)



WALL BRACKET- Ref.: 20213.0
Height: 72 cm / 28,35 in
Width: 13 cm / 5,12 in
Depth: 17 cm / 6,69 in
Net weight: 2,39 Kg / 5,26 lb
Finish: DB (67)





WALL BRACKET– Ref.: 20217.0
Height: 39 cm / 15,35 in
Width: 24 cm / 9,45 in
Depth: 16 cm / 6,3 in
Net weight: 2,65 Kg / 5,84 lb
Finish: DB (67)





*WALL BRACKET– Ref.: 20233.0
Height: 26 cm / 10,24 in
Width: 13 cm / 5,12 in
Depth: 23 cm / 9,06 in
Net weight: 3,10 Kg / 6,83 lb
Finish: D.B/ F.U (591)*





WALL BRACKET– Ref.: 20256.0
Height: 45 cm / 17,72 in
Width: 11 cm / 4,33 in
Depth: 17 cm / 6,69 in
Net weight: 4,00 Kg / 8,81 lb
Finish: DB (67)

WALL BRACKET– Ref.: 20255.0
Height: 45 cm / 17,72 in
Width: 28 cm / 11,02 in
Depth: 15 cm / 5,91 in
Net weight: 7,00 Kg / 15,42 lb
Finish: DB (67)





WALL BRACKET- Ref.: 20261.0
(Fume crystal)
Height: 47 cm / 18,5 in
Width: 40 cm / 15,75 in
Depth: 19 cm / 7,48 in
Net weight: 3,00 Kg / 6,61 lb
Finish: DB (67)





WALL BRACKET – Ref.: 20277
Height: 52 cm / 20,47 in
Width: 29 cm / 11,42 in
Depth: 17 cm / 6,69 in
Net weight: 10,00 Kg / 22,03 lb
Finish: OA (231)
Materials: Casted Bronze & Venetian glass.
4 (G9)



WALL BRACKET – Ref.: 20272
Height: 41 cm / 16,14 in
Width: 28 cm / 11,02 in
Depth: 13 cm / 5,12 in
Net weight: 8,00 Kg / 17,62 lb
Finish: DB (67)
Materials: Casted Bronze & Venetian glass.
2 E-14



*WALL BRAQUET– Ref.: 20282.0
Height: 57cm / 68,9 in
Width: 31 cm / 12,2 in
Depth: 20 cm / 7,87 in
Net weight: 4,7Kg / 10,35lb
Finish: OA.DB/NAB (595/515)
Shade Ref: 629.043
Materials: Casted Bronze & Wood
1 (E27)*



*WALL BRAQUET– Ref.: 20086.0
Height: 24cm / 9,45 in
Width: 20 cm / 7,87 in
Depth: 11 cm / 4,33in
Net weight: 4,7Kg / 10,35lb
Finish: OA (231)
Materials: Casted Bronze & White Alabaster
1 (G9)*



WALL BRACKET – Ref.: 20298
Height: 14 cm / 5,51 in
Width: 52 cm / 20,47 in
Depth: 19 cm / 7,48 in
Net weight: 8,00 Kg / 17,62 lb
Finish: OF (55)
Materials: Casted bronze & Brass
2 (G9)





WALL BRACKET – Ref.: 20301.0
Height: 35 cm / 13,7 in
Width: 32 cm / 12,6 in
Depth: 15 cm / 5,90 in
Net weight: 2,00 Kg / 4,41 lb
Finish: OA (231)
Shade Ref: 629.051
Materials: Casted bronze & Brass
2 (E-14)





*WALL BRACKET – Ref.: 20302.0
Height: 36cm / 14,17 in
Width: 22 cm / 8,66 in
Depth: 23/40 cm / 9,05 / 15,74 in
Net weight: 2,00 Kg / 4,41 lb
Finish: OA (231)
Shade Ref: 629.052
Materials: Casted bronze & Brass
1 (E-14)*



*WALL BRACKET – Ref.: 20303.0
Height: 38 cm / 14,96 in
Width: 18 cm / 7,08 in
Depth: 10 cm / 3,93in
Net weight: 2,00 Kg / 4,41 lb
Finish: OA (231)
Shade Ref: 629.057
Materials: Casted bronze & Brass
1 (E-14)*



*WALL BRACKET – Ref.: 20304.0
Height: 40 cm / 15,74 in
Width: 18 cm / 7,08 in
Depth: 10 cm / 3,93in
Net weight: 2,00 Kg / 4,41 lb
Finish: OA (231)
Shade Ref: 629.057
Materials: Casted bronze & Brass
1 (E-14)*



*WALL BRACKET – Ref.: 20311.0
Height: 38 cm / 14,9 in
Width: 30 cm / 11,8 in
Depth: 20 cm / 7,80 in
Net weight: 2,00 Kg / 4,41 lb
Finish: OA (231)
Shade Ref: 629.051
Materials: Casted bronze & Brass
2 (E-14)*

MARINIER

MARINIER

MARINIER

MARINIER

MARINIER
Made in Spain

MARINIER
Made in Spain



OA (291)
Antique Gold Plated



OF (55)
French Gold



DB (57)
Polished Brass



POE (350)
Old Gold Leaf



BROX (211)
Oxidized Bronze



AN (491)
Art Nouveau



BE (345)
Aged Bronze



PPE (391)
Old Silver Leaf



PLANT (387)
Antique Silver Plated



PLB (04)
Polished Silver



PLAVI (56)
Old Silver



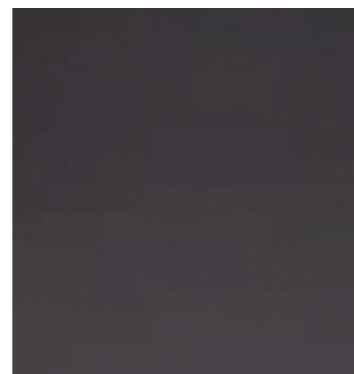
AC.B (477)
Polished Steel



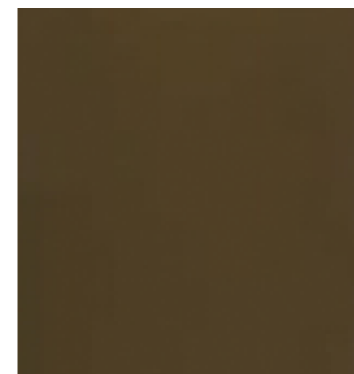
NI.B (516)
Polished Nickel



CR.B (420)
Polished Chrome



FU (563)



E.BR (550)

marinerluxury.com